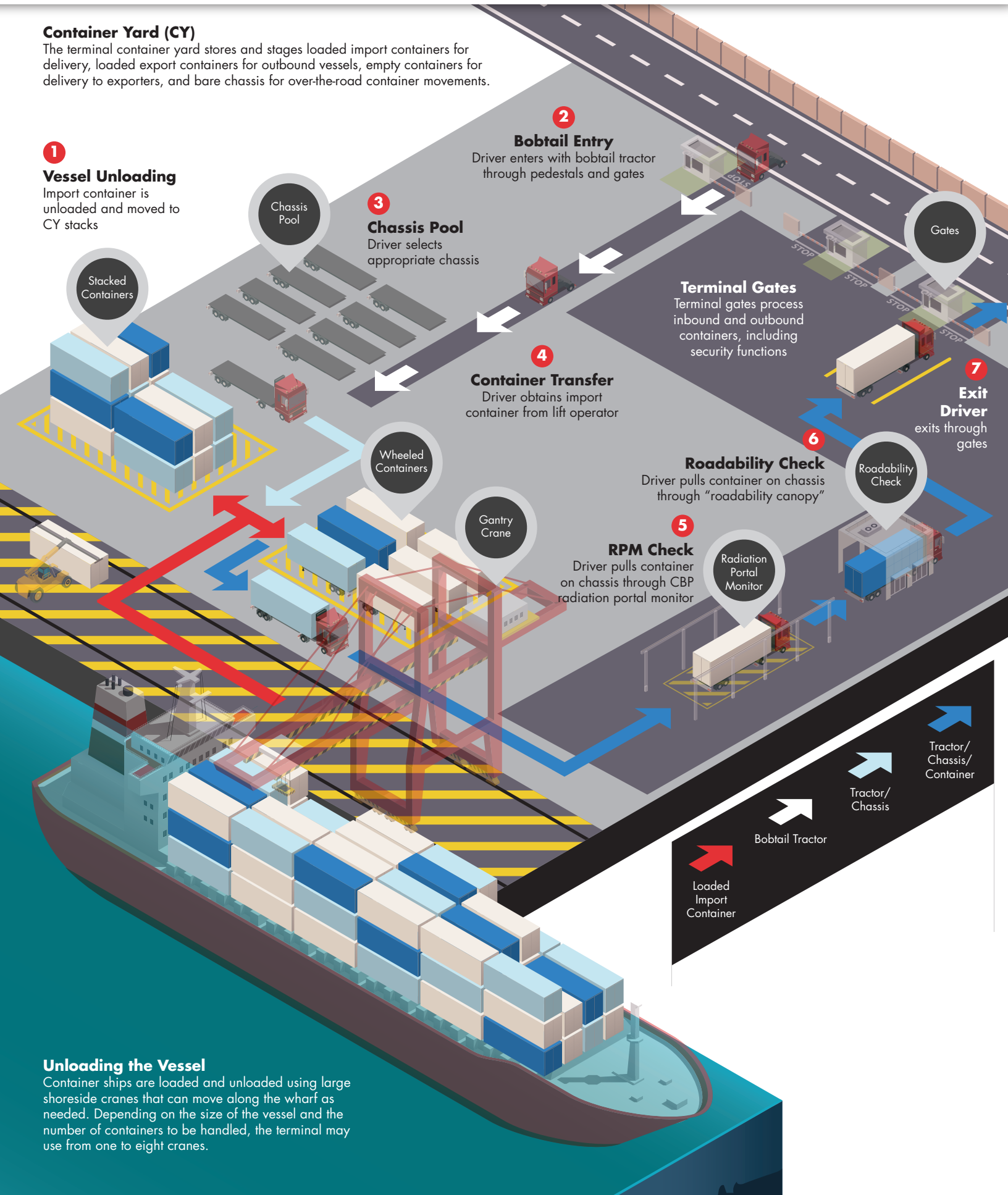


Container Yard (CY)

The terminal container yard stores and stages loaded import containers for delivery, loaded export containers for outbound vessels, empty containers for delivery to exporters, and bare chassis for over-the-road container movements.



Unloading the Vessel

Container ships are loaded and unloaded using large shoreside cranes that can move along the wharf as needed. Depending on the size of the vessel and the number of containers to be handled, the terminal may use from one to eight cranes.