

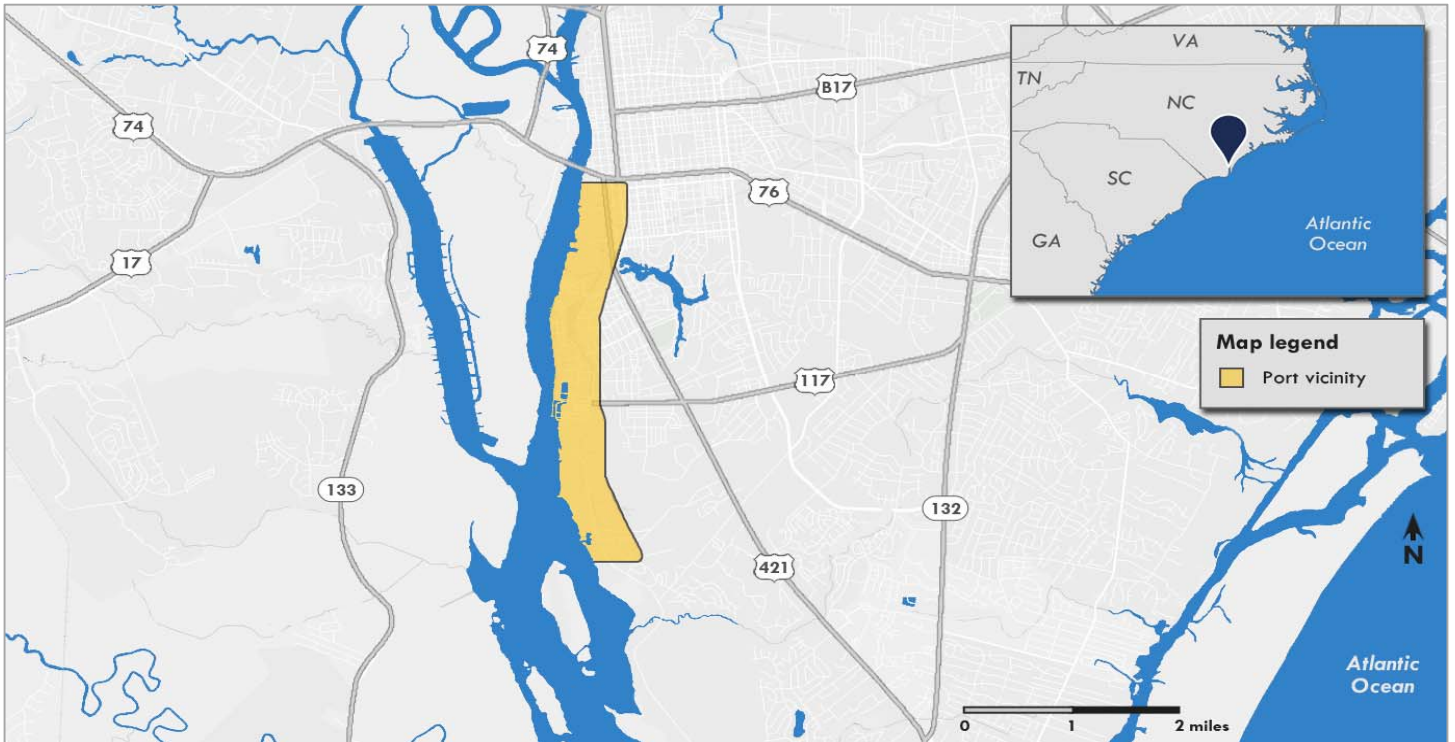
PORT OF WILMINGTON (NC)

North Carolina

Atlantic Coast

Port list:

Container



Port vicinity map illustrates area facilities.

Port overview

The Port of Wilmington, North Carolina, is located on the east bank of the Cape Fear River, about 26 miles upriver from the Atlantic Ocean. The 11-member Board of Directors for the North Carolina Ports Authority (NCPA) oversees the port.

The port has one public container terminal and a general cargo terminal that handles bulk, break-bulk, and Ro/Ro cargoes. Major commodities handled by the port include fertilizers, pulp and waste paper, textiles, grain, and chemicals. The port also has an onsite cold storage facility for perishable cargoes.

The port has on-dock rail container service with access to a Class I rail line; intermodal connections are provided from this Class I service via a new intermodal terminal (see port updates section below).

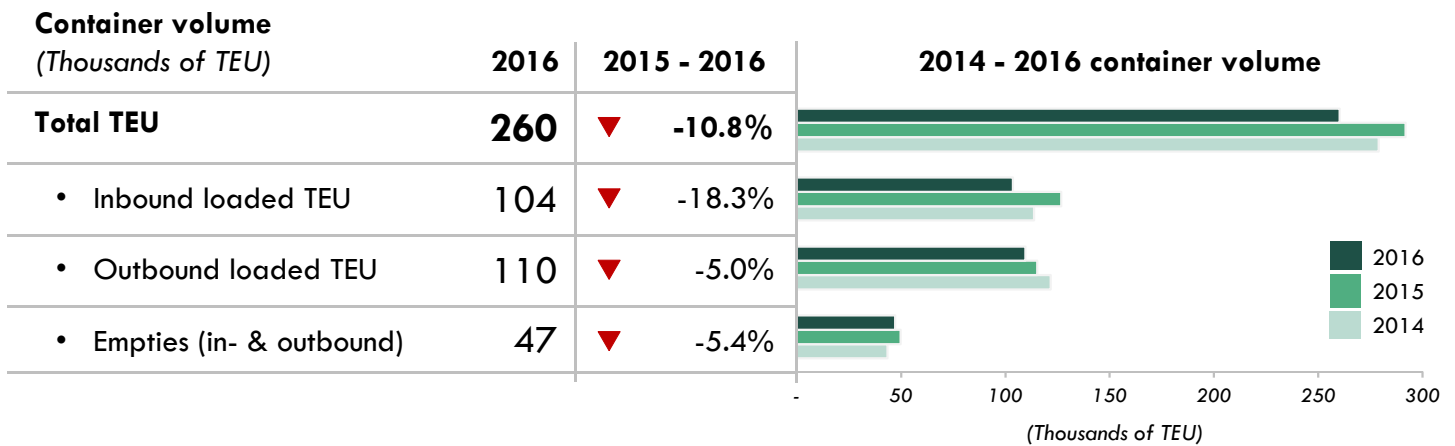
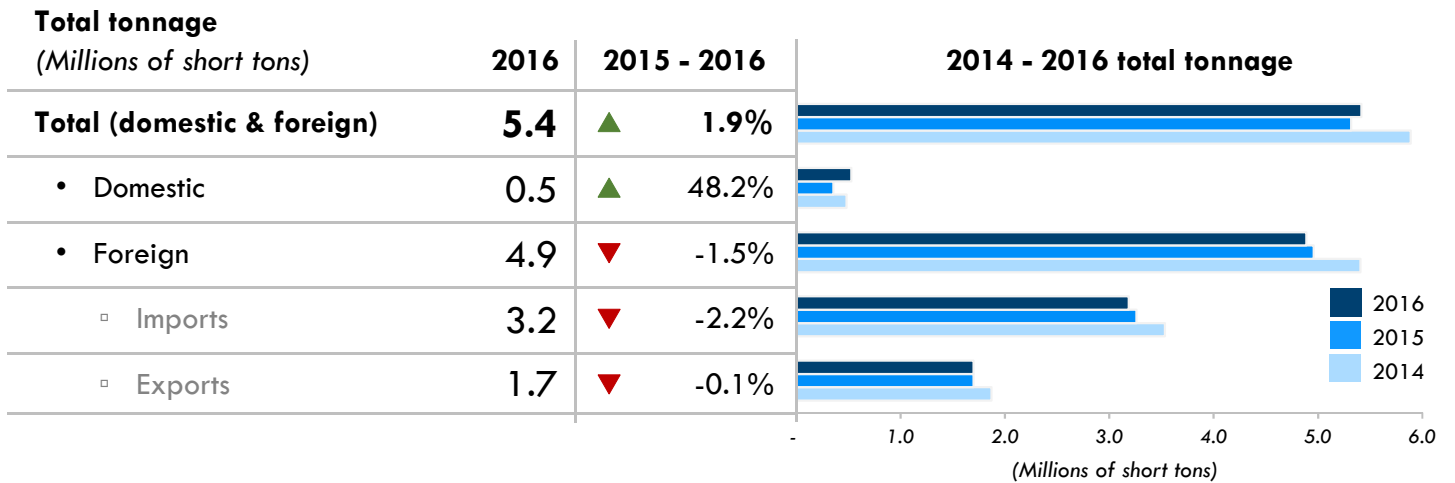
Port Updates:

In January 2017, NCPA ordered a pair of Super Post-Panamax cranes for delivery in early 2018, which will augment its existing four Post-Panamax cranes. In addition, in July 2017 the NCPA reached an agreement with CSX to begin daily double-stacked rail service (starting in late July 2017) between the Port of Wilmington and NCPA's intermodal facility in Charlotte, North Carolina.

PORT OF WILMINGTON (NC) (CONTINUED)

THROUGHPUT

Cargo

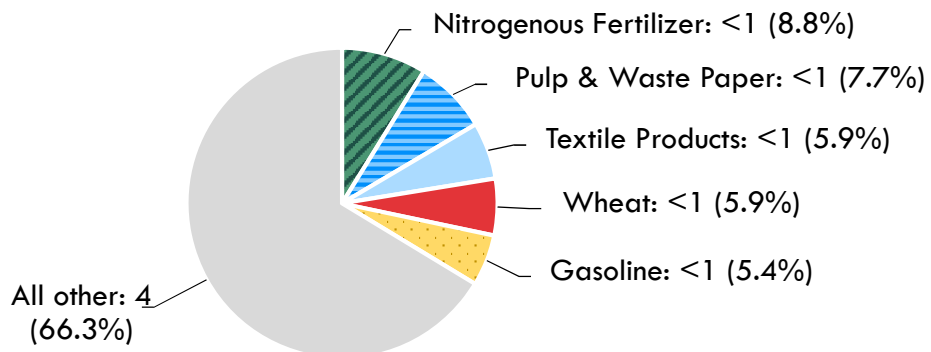


PORT OF WILMINGTON (NC) (CONTINUED)

THROUGHPUT

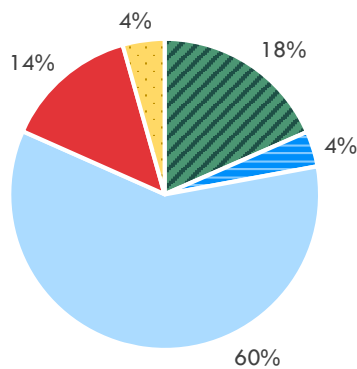
Commodities

Tonnage Millions of short tons (percent of total)



Vessel calls

% of total vessel calls

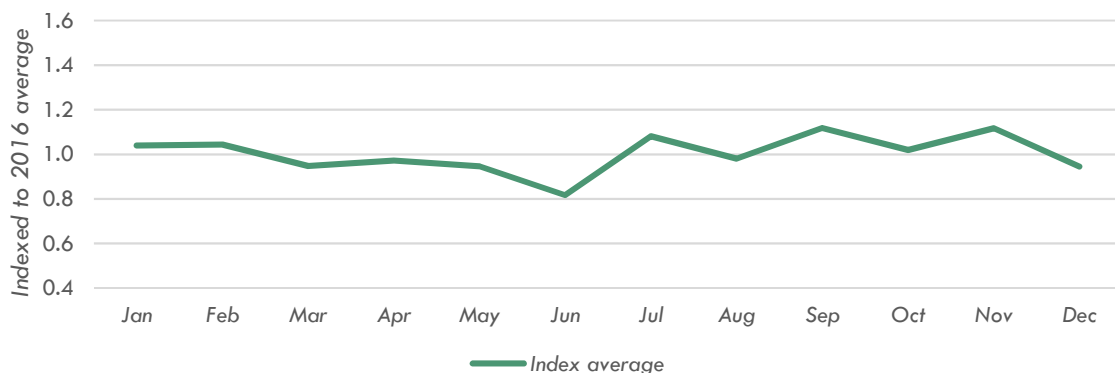


By vessel type

| | 2016 | 2015 - 2016 |
|---|--------------|----------------|
| Total vessel calls | 1,499 | ▲ 1.0% |
| Container vessel | 276 | ▲ 16.2% |
| Average TEU per container vessel | 943 | ▼ -23.3% |
| Dry bulk vessel | 56 | 0.0% |
| Average dry bulk tonnage (short tons) per dry bulk vessel | 28,802 | |
| Dry bulk barge | 893 | ▼ -6.5% |
| Average dry bulk tonnage (short tons) per non-dry bulk vessel | 56 | |
| Other freight vessel | 210 | ▲ 11.1% |
| Other freight barge | 66 | ▲ 36.5% |

Vessel dwell time

2016 container vessel dwell time index



PORT OF WILMINGTON (NC) (CONTINUED)

CAPACITY

Container terminals

| Terminal Name | Acres | Berth length (ft) | Air draft (ft) | Limiting bridge name | Min. project depth | Cranes | | | On-dock rail |
|---------------------------------------|-------|-------------------|----------------|----------------------|--------------------|---------|-----|-----------|--------------|
| | | | | | | Panamax | PPX | Super PPX | |
| Port of Wilmington Container Terminal | 80 | 2,000 | N/A | N/A | 42 | 2 | 4 | - | Y |

Non-container terminals

In addition to the container terminal listed above, the Port of Wilmington complex includes the following terminals: Port of Wilmington General Cargo Terminal and private bulk terminals.

Channel depth

| | | | |
|-------------------------------|-------------|--|-------------|
| Authorized channel depth (ft) | 42.0 | Maximum depth of approach channel (ft) | 44.0 |
|-------------------------------|-------------|--|-------------|

NOTES: Capacity information verified by port per AAPA communication. "N/A" designates a metric that does not apply for this port. Vessel call numbers might not add to 100% due to rounding.

SOURCES: Port Overview/Terminals—Port of Wilmington website, available at <http://ncports.com>, including terminal websites accessed through the main port website, as of November 2017.