

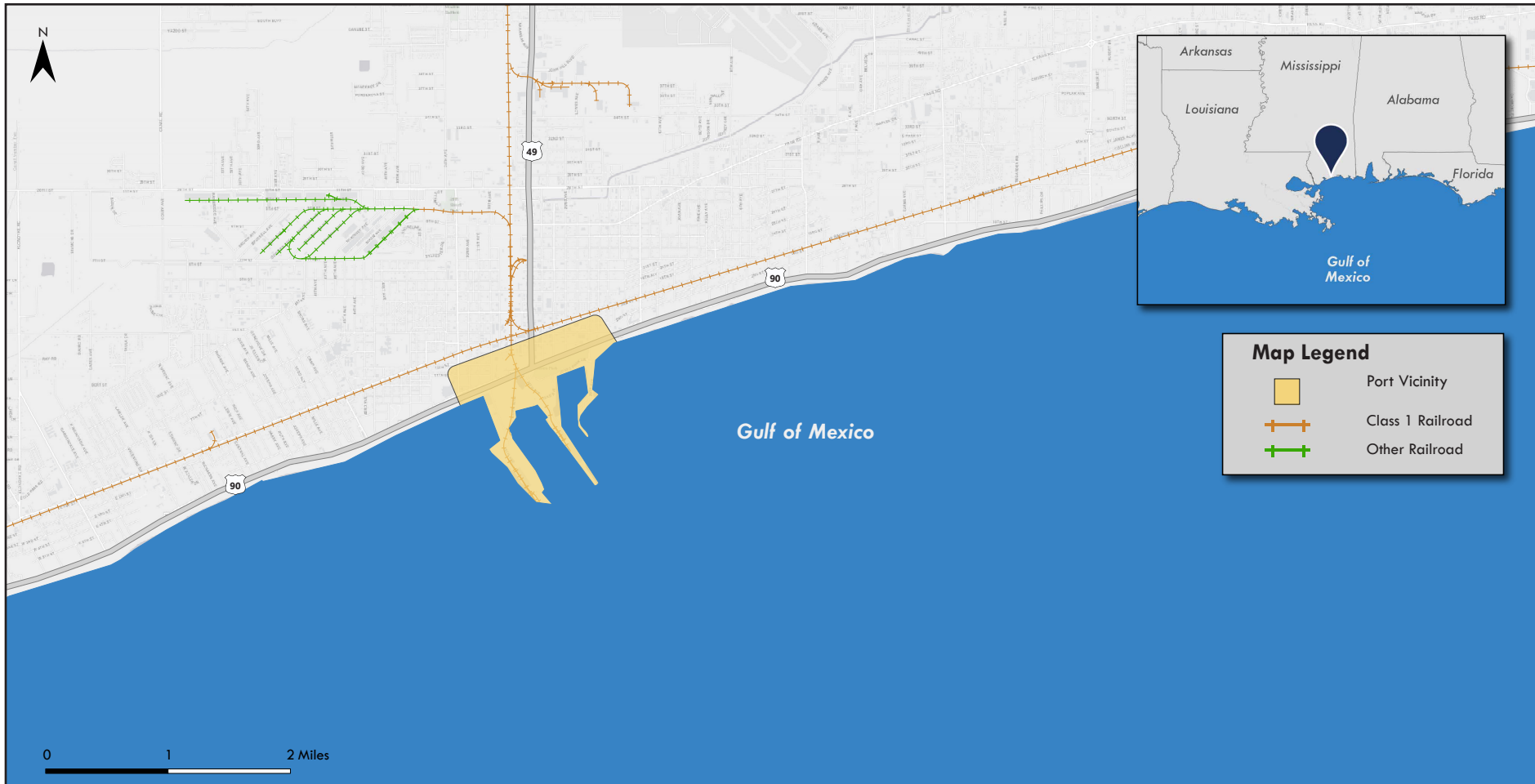
PORT OF GULFPORT

Mississippi

Gulf Coast & Mississippi River

Port list:

Container



Port vicinity map illustrates area facilities.

PORT OF GULFPORT (CONTINUED)

OVERVIEW

The Port of Gulfport is located in southern Mississippi on the Gulf Coast, five miles east of Bay St. Louis and five nautical miles from the Gulf Intracoastal Waterway. The port is governed by a five-member commission with representatives from the city of Gulfport and Harrison County.

The port has ten berths located at two terminals (West and East Pier Terminals), as well as four warehouses, two of which have direct rail access. An additional Ro/Ro berth is located at the West Pier Terminal. Further inland is a port facility offering additional rail access and barge connections.

The port has facilities to handle containerized and bulk cargo. Primary commodities moving through the port include fresh produce, frozen poultry, apparel, automobiles, and ore.

Port Updates:

In November 2017, USACE released a Record of Decision on the Gulfport Expansion project, paving the way for the port's next significant expansion, including a 282-acre dredge and fill program for expansion of the West and East Pier Terminals, and a 4,000 linear foot breakwater system. The port also plans to develop a new compressed gas liquids plant in conjunction with a private company.

CAPACITY

Channel depth

Authorized channel depth (ft)

36.0

Maximum depth of approach channel (ft)

38.0

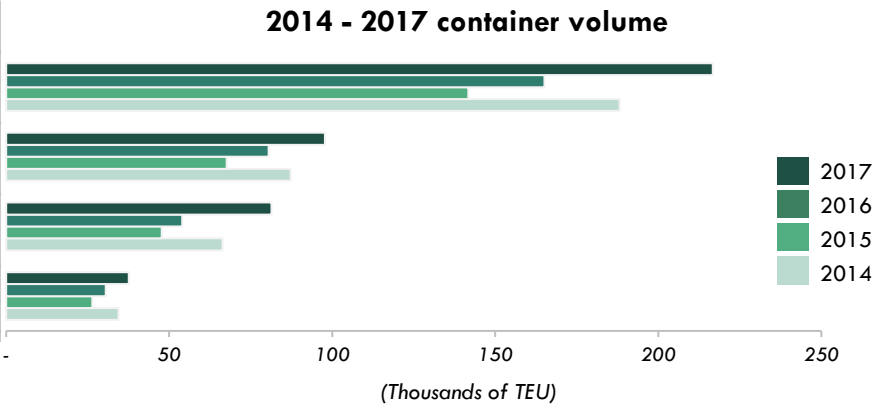
PORT OF GULFPORT (CONTINUED)

CONTAINER THROUGHPUT & CAPACITY

Container volume

(Thousands of TEU)

	2017	2016 - 2017
Total TEU	217	▲ 31.2%
• Inbound loaded TEU	98	▲ 21.4%
• Outbound loaded TEU	81	▲ 50.6%
• Empties (in- & outbound)	38	▲ 22.9%



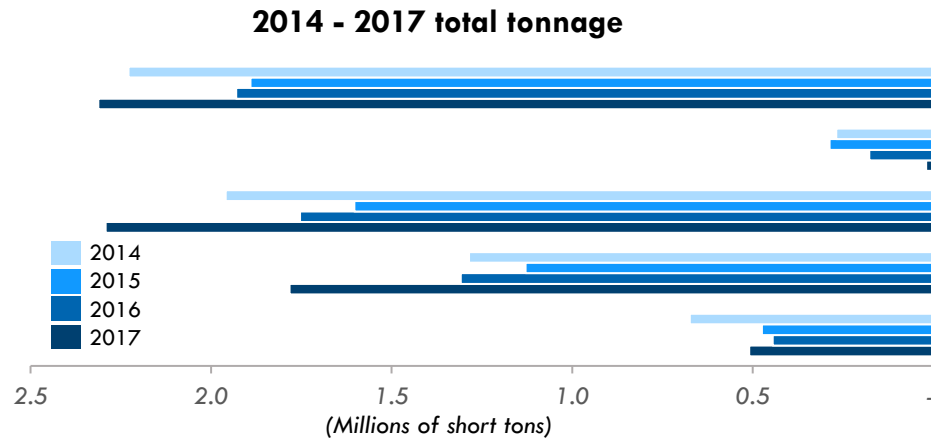
Container terminals

Terminal Name	Acres	Berth length (ft)	Air draft (ft)	Limiting bridge name	Min. project depth	Panamax cranes	PPX cranes	Super PPX cranes	On-dock rail
East Pier	58	2,134	N/A	N/A	32	-	-	-	Y
West Pier	87	3,840	N/A	N/A	32	-	3	-	Y

PORT OF GULFPORT (CONTINUED)

THROUGHPUT

Cargo



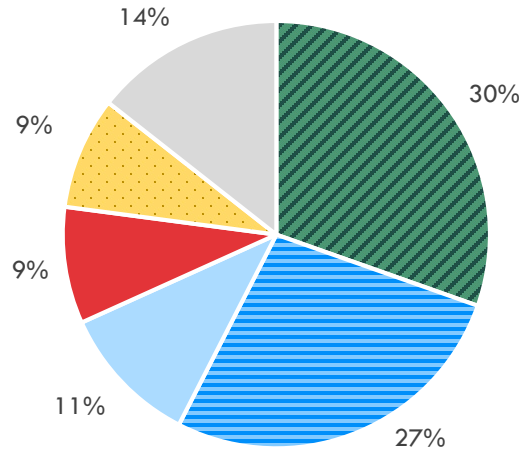
Total tonnage (Millions of short tons)	2017	2016 - 2017
Total (domestic & foreign)	2.3	▲ 19.8%
• Domestic	0.0	▼ -88.7%
• Foreign	2.3	▲ 30.7%
▫ Imports	1.8	▲ 36.2%
▫ Exports	0.5	▲ 14.6%

PORT OF GULFPORT (CONTINUED)

THROUGHPUT (CONTINUED)

Commodities

% of total tonnage



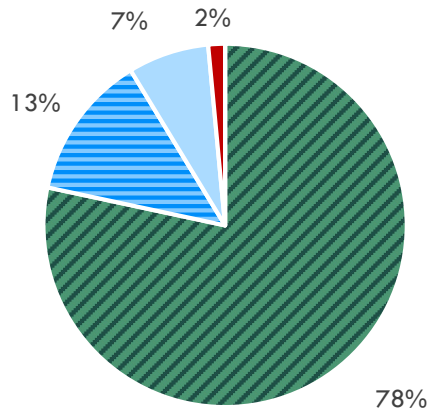
By 4-digit commodity group (millions of short tons)	2017	2016 - 2017
Total tonnage	2.3	▲ 19.8%
■ Non-Ferrous Ores NEC	0.7	▲ 51.2%
■ Bananas	0.6	▲ 19.1%
■ Textile Products	0.2	▼ -8.6%
■ Paper & Paperboard	0.2	▲ 26.2%
■ Limestone	0.2	▲ 19.7%
■ All other	0.3	▼ -2.4%

PORT OF GULFPORT (CONTINUED)

THROUGHPUT

Vessel calls

% of total vessel calls



By vessel type

	2017	2016 - 2017
Total vessel calls	1,001	▲ 278.4%
Container vessel	158	▲ 24.5%
Average TEU per container vessel	1,376	▲ 5.4%
Dry bulk vessel	26	▲ 40.5%
Average dry bulk short tons per dry bulk vessel	32,945	▲ 10.0%
Dry bulk barge	15	▼ -87.3%
Average dry bulk short tons per dry bulk barge	1,382	▼ -10.8%
Other freight vessel	3	▲ 20.0%
Other freight barge	0	▼ -100.0%

2016 - 2017 Vessel Dwell Time Indices

container dwell time index

