

PORT OF SAN JUAN

Puerto Rico

Gulf Coast & Mississippi River

Port list:

Container



Port vicinity map illustrates area facilities.

PORT OF SAN JUAN (CONTINUED)

OVERVIEW

The multiple public and private passenger and cargo facilities in and around San Juan Bay are collectively known as the Port of San Juan. Public facilities are administered by the Puerto Rico Ports Authority (PRPA), under Puerto Rico’s Department of Transportation and Public Works. PRPA oversees all Puerto Rican seaports and airports, and is governed by an appointed Board of Directors.

The port’s main public cargo facilities are located in the Puerto Nuevo complex, which handles containerized and break-bulk cargoes with and without shore-side cranes. Containers are also handled at the private Isla Grande barge terminal. Additional private facilities handle containers in Ro/Ro and barge service, and bulk commodities. Major commodities handled at the port include manufactured products, distillate fuel oil, gasoline, foodstuffs, and kerosene.

The Port of San Juan suffered major disruption and damage during the 2017 hurricane season.

CAPACITY

Channel depth

Authorized channel depth (ft)	56.0	Maximum depth of approach channel (ft)	40.0
-------------------------------	------	----------------------------------------	------

PORT OF SAN JUAN (CONTINUED)

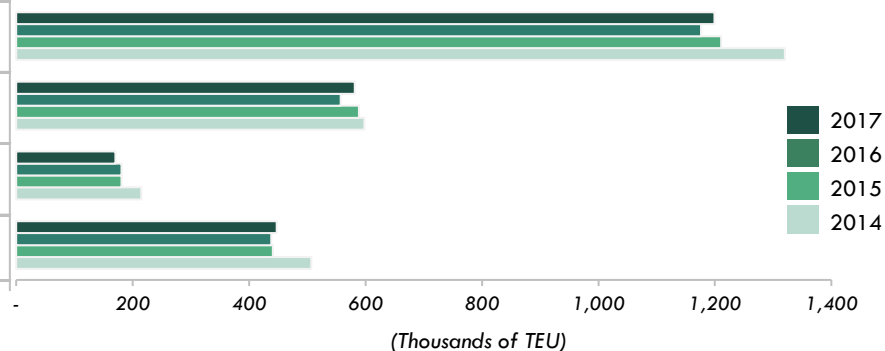
CONTAINER THROUGHPUT & CAPACITY

Container volume

(Thousands of TEU)

	2017	2016 - 2017
Total TEU	1,199	▲ 2.0%
• Inbound loaded TEU	581	▲ 4.3%
• Outbound loaded TEU	171	▼ -5.7%
• Empties (in- & outbound)	447	▲ 2.1%

2014 - 2017 container volume



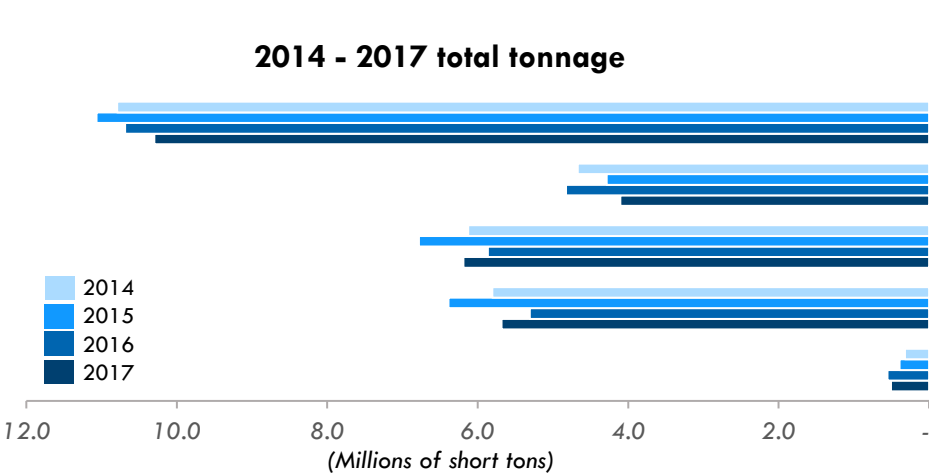
Container terminals

Terminal Name	Acres	Berth length (ft)	Air draft (ft)	Limiting bridge name	Min. project depth	Panamax cranes	PPX cranes	Super PPX cranes	On-dock rail
Puerto Nuevo Complex	25	7,150	N/A	N/A	39	9	2	-	N
Isla Grande	U	2,000	N/A	N/A	36	-	-	-	N

PORT OF SAN JUAN (CONTINUED)

THROUGHPUT

Cargo



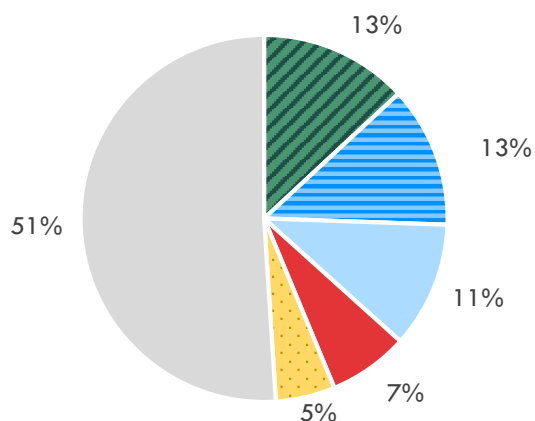
Total tonnage (Millions of short tons)	2017	2016 - 2017
Total (domestic & foreign)	10.3	▼ -3.7%
• Domestic	4.1	▼ -14.9%
• Foreign	6.2	▲ 5.6%
▫ Imports	5.7	▲ 7.1%
▫ Exports	0.5	▼ -8.5%

PORT OF SAN JUAN (CONTINUED)

THROUGHPUT (CONTINUED)

Commodities

% of total tonnage



By 4-digit commodity group (millions of short tons)

2017

2016 - 2017

Total tonnage

10.3

▼ -3.7%

Manufactured Products NEC

1.3

▼ -8.0%

Gasoline

1.3

▲ 7.5%

Diesel & Fuel Oil

1.1

▼ -12.4%

Kerosene

0.7

▲ 36.4%

Groceries

0.5

▼ -31.0%

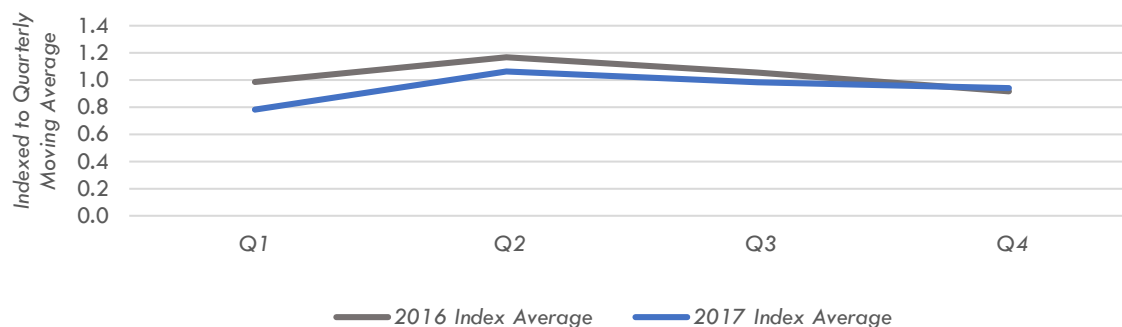
All other

5.3

▼ -2.8%

Food and farm product tonnage

2016 - 2017 food and farm product index



Top 5 food and farm products

(Thousands of short tons)

2017

Groceries

539

Food Products NEC

330

Vegetables & Produce

325

Grain Mill Products

313

Meat

207

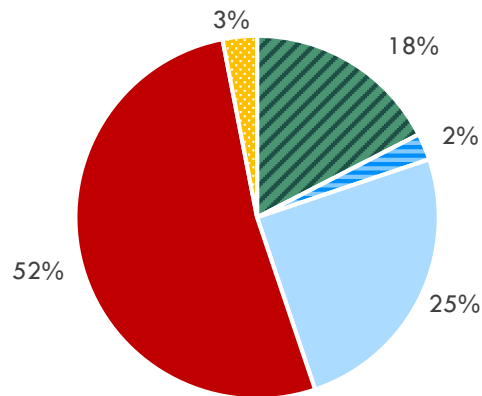
(4-digit commodity group; 5,000-ton minimum)

PORT OF SAN JUAN (CONTINUED)

THROUGHPUT

Vessel calls

% of total vessel calls



By vessel type

Total vessel calls

2017

2016 - 2017

Container vessel

2,322

▲ 54.7%

Average TEU per container vessel

266

▲ 4.5%

4,517

N/A

Dry bulk vessel

36

▲ 33.3%

Average dry bulk short tons per dry bulk vessel

13,235

▼ -29.6%

Dry bulk barge

381

▼ -16.4%

Average dry bulk short tons per dry bulk barge

4,269

▼ -19.8%

Other freight vessel

793

▲ 11.6%

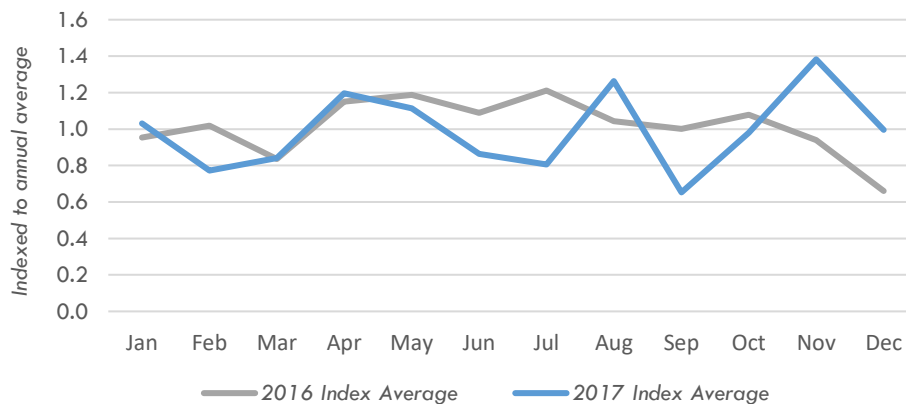
Other freight barge

47

▼ -14.7%

2016 - 2017 Vessel Dwell Time Indices

tanker dwell time index



container dwell time index

